

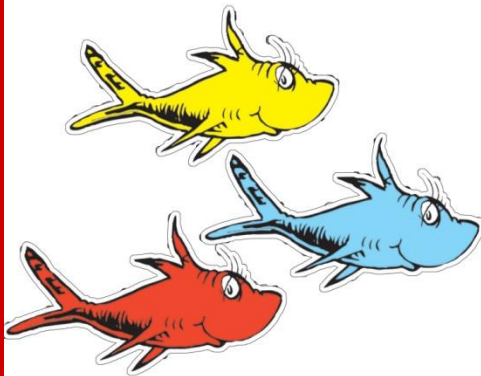
Westmoreland Coal Company

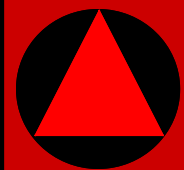
FOR THE LOVE OF FISH

Estevan Mine Fish Salvage

Stacey Lowe

Junior Environmental Planner



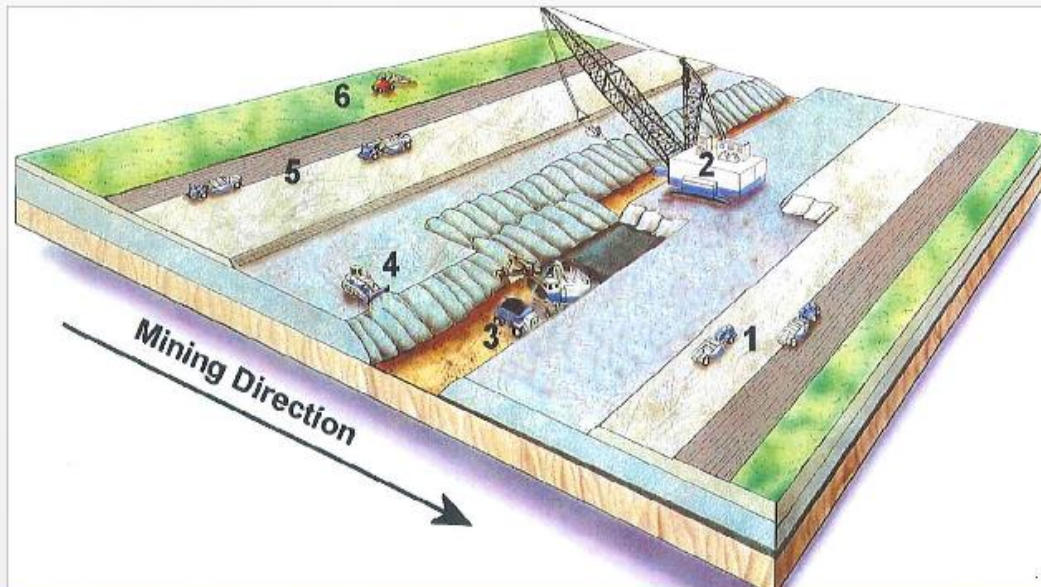


Discovery

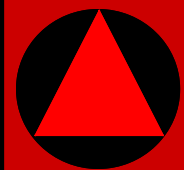
- April 1, 2015
- Dewatering of Old End Cut



Process of Coal Strip Mining



1. Before mining begins all suitable soils are salvaged and hauled to areas undergoing reclamation or retained in stockpiles for future use.
2. The dragline removes the overburden to expose the coal seam. The overburden is placed in the adjacent mined-out cut. The coal seam is uncovered.
3. Coal is loaded into large-capacity trucks for transport to the power station.
4. Bulldozers re-contour the overburden removed by the dragline. This step is the first stage in land reclamation.
5. Soils salvaged prior to mining is replaced on the re-contoured overburden.
6. The land is re-vegetated and returned to agriculture production or other acceptable land use as defined in the operating approvals.



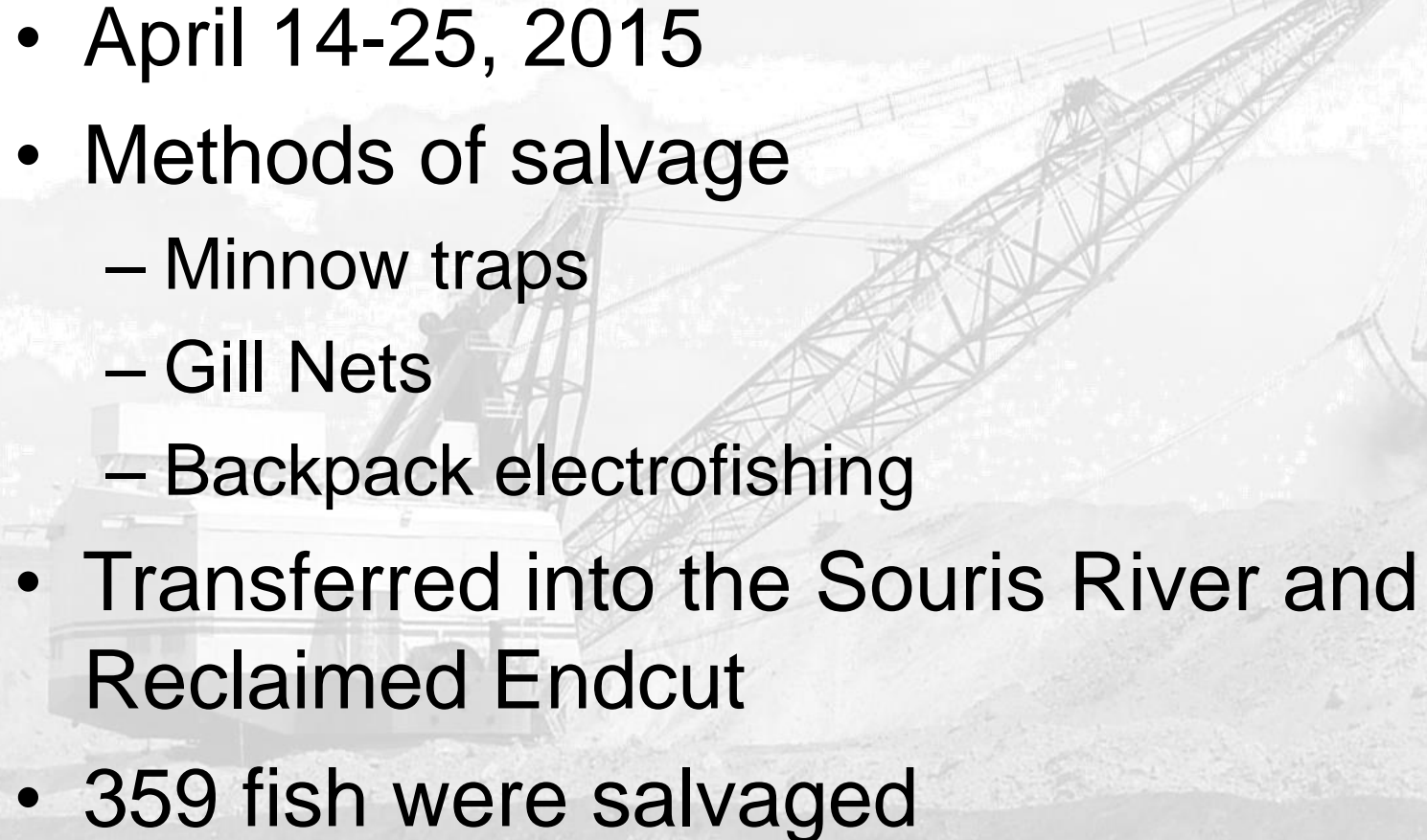
Immediate Action

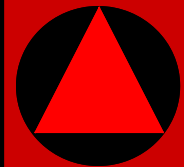
- Stop pumping
- Make management aware
- Collect Basic Data:
 - Fish Species and Count
 - Water Depth
 - Access to Area
 - Purpose of Dewatering
- Find out dragline advance timing





Salvage

- April 14-25, 2015
 - Methods of salvage
 - Minnow traps
 - Gill Nets
 - Backpack electrofishing
 - Transferred into the Souris River and Reclaimed Endcut
 - 359 fish were salvaged
- 



Salvage Photos



Cell 1 before drainage



Cell 2 following partial drainage



Cell 3 connection to Cell 4 before draining



Pumping system and gillnets in Cell 1



Souris River release location downstream of crossing



Average northern pike size

Education and Awareness

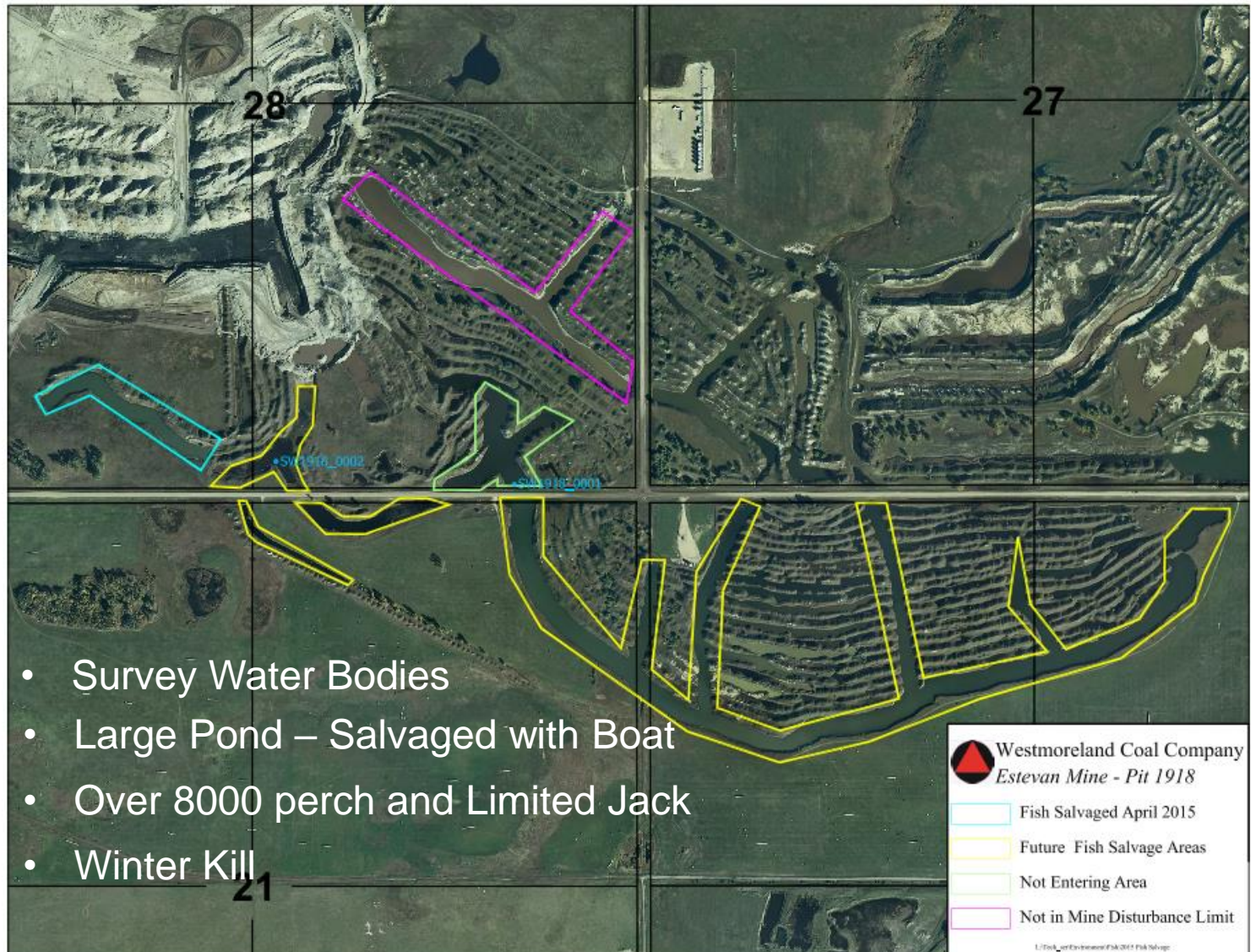


where they came from we cannot say,
one thing for sure they CANNOT stay!

so send your guess to Stacey Lowe
tell her how many fish will have to go!

closest guess...half the prize
other half to those other guys*

Additional Ponds





Why?

- Tying into a previously mined end cut is a standard practice when returning to an area
- This particular mining block has a favorable mining ratio.
- Avoid this area while preserving the current end cut would require leaving behind a considerable amount of coal
- Generation of approx. 1 MW/tonne of electricity to the sask grid.