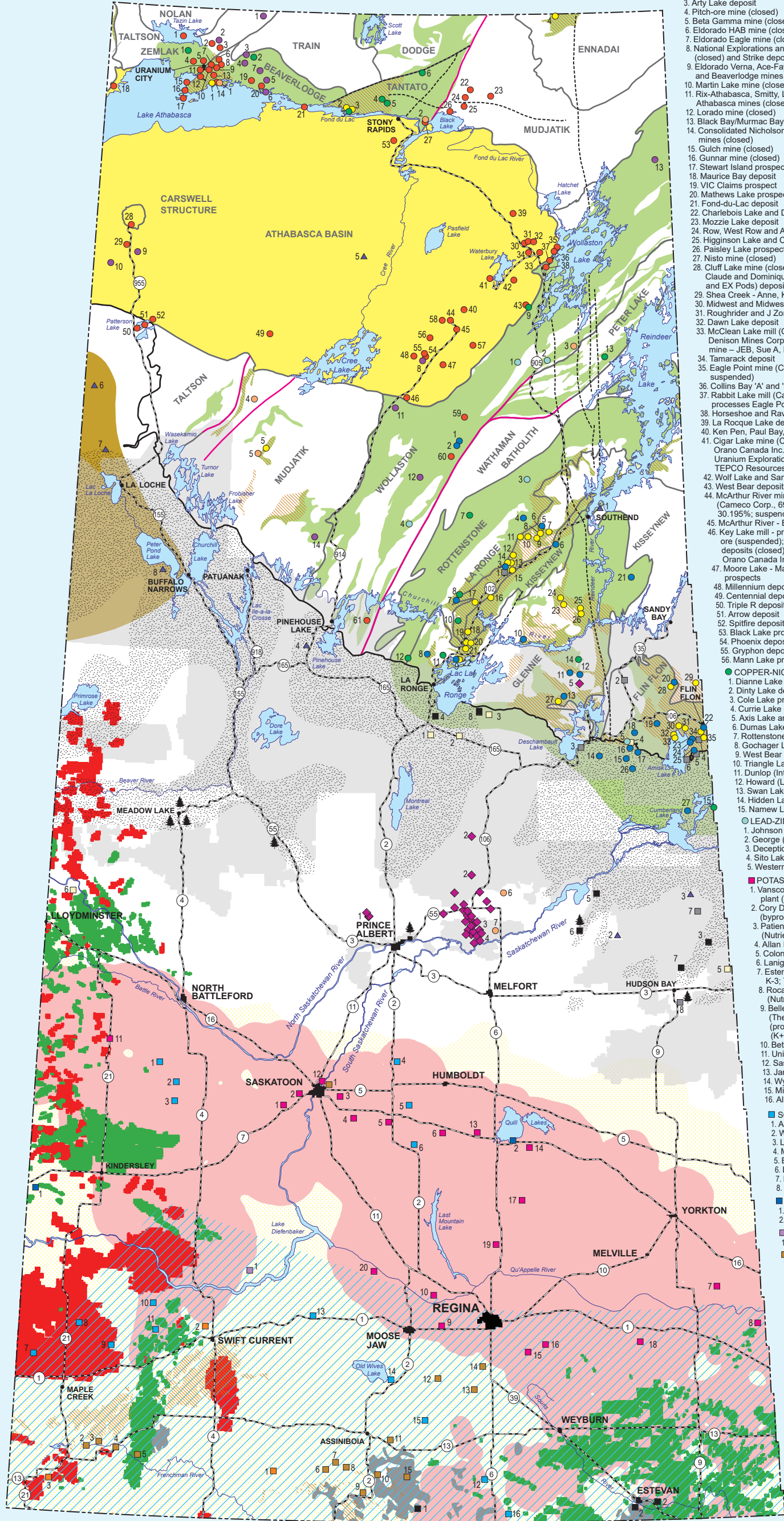


RESOURCE MAP OF SASKATCHEWAN

Saskatchewan Geological Survey Miscellaneous Report 2021-1

KEY TO NUMBERED OCCURRENCES †



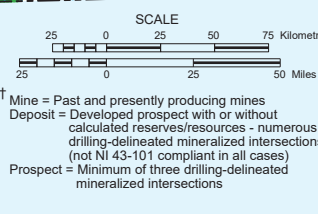
- URANIUM**
 1. Laird Island prospect
 2. Nesbitt Lake prospect
 3. Arty Lake deposit
 4. Pitch-ore mine (closed)
 5. Beta Gamma mine (closed)
 6. Eldorado HAB mine (closed) and Baska prospect
 7. Eldorado Eagle mine (closed) and ABC deposit
 8. National Explorations and Eldorado Dubyna mines (closed) and Strike deposit
 9. Eldorado Verna, Ace-Fay, Nesbitt Labine (Eagle-Ace) and Beaverlodge mines and Bolger open pit (closed)
 10. Martin Lake mine (closed)
 11. Rix-Althabasca, Smitty, Leonard, Cinch and Cayzor Athabasca mines (closed); St. Michael prospect
 12. Lorado mine (closed)
 13. Black Bay/Murmac Bay mine (closed)
 14. Consolidated Nicholson Bay and Fish Hook Bay mines (closed)
 15. Gulch mine (closed)
 16. Gunnar mine (closed)
 17. Stewart Island prospect
 18. Maurice Bay deposit
 19. VIC Claims prospect
 20. Mathews Lake prospect
 21. Fond-du-Lac deposit
 22. Charlebois Lake and David deposits
 23. Mozzie Lake deposit
 24. Row, West Row and ART prospects
 25. Higginson Lake and Corrigan Lake prospects
 26. Paisley Lake prospect
 27. Nisto mine (closed)
 28. Cluff Lake mine (closed) - D, Dominique-Peter, Claude and Dominique-Janine (North, EX OP, UG and EX Pools) deposits
 29. Shea Creek - Anne, Kianna and Colette deposits
 30. Midwest and Midwest A deposits
 31. Roughrider and J Zone deposits and Huskie zone
 32. Dawn Lake deposit
 33. McClean Lake mill (Orano Canada Inc., 70%; Denison Mines Corp., 22.5%; OURD, 7.5%); mine - JEB, Sue A, B, C and E deposits (closed)
 34. Tamarack deposit
 35. Eagle Point mine (Cameco Corp., 100%; suspended)
 36. Collins Bay 'A' and 'B' Zone deposits (mined out)
 37. Rabbit Lake mill (Cameco Corp., 100%); processes Eagle Point mine ore; mine (closed)
 38. Horseshoe and Raven deposits
 39. La Rocque Lake deposit and Hurricane zone
 40. Ken Pen, Paul Bay, and Orora deposits
 41. Cigar Lake mine (Cameco Corp., 50.025%; Orano Canada Inc., 37.1%; Idemitsu Uranium Exploration Canada Ltd., 7.875%; TEPCO Resources Inc., 5%)
 42. Wolf Lake and Sand Lake deposits
 43. West Bear deposit
 44. McArthur River mine - McArthur River deposit (Cameco Corp., 69.805%; Orano Canada Inc., 30.195%; suspended)
 45. McArthur River - BJ zone deposit
 46. Key Lake mill - processes McArthur River mine ore (suspended); mine - Gaertner and Deilmann deposits (closed); (Cameco Corp., 83.33%; Orano Canada Inc., 16.67%)
 47. Moore Lake - Maverick deposit; 525 and 527 prospects
 48. Millennium deposit
 49. Centennial deposit
 50. Triple R deposit
 51. Arrow deposit
 52. Spillfire deposit
 53. Black Lake prospect
 54. Phoenix deposit
 55. Gryphon deposit
 56. Mann Lake prospect
 57. Harrigan zone prospect
 58. Fox Lake deposit
 59. Fraser Lakes B Zone deposit
 60. Burbidge Lake (Burr) prospect
 61. Duddridge Lake (Thor) deposit
- GOLD**
 1. Box mine (closed), Athona deposit and Frontier Adit prospect
 2. ELA prospect
 3. Pine Channel prospects
 4. Nirdac Creek prospect
 5. Ithingo Lake deposit
 6. Twin Zone and Wedge Lake deposits
 7. Golden Heart deposit
 8. EP and Komis mines (closed)
 9. Corner Lake deposit
 10. Tower East and Memorial deposits
 11. Birch Crossing deposits
 12. Jojay deposit
 13. Star Lake mine (closed)
 14. Jolu and Decade mines (closed)
 15. Jasper mine (closed)
 16. Greywacke deposit
 17. Roy Lloyd mine - Bingo deposit (suspended)
 18. North Lake deposit
 19. Contact Lake mine (closed)
 20. Preview North and South, PAP A, B and C and PAP/Preview SW deposits
 21. Sulphide Lake deposits
 22. Anglo-Rouyn tailings
 23. Seabee mine (closed) and mill
 24. Porky Main/West deposits
 25. Santoy 8/Santoy Gap mines (SSR Mining Inc.), Santoy 7 deposit
 26. Mac's zone prospect
 27. Brownell Lake occurrences
 28. Manson Bay (Schotts Lake) deposit
 29. Eccles Lake (Dolly) prospect
 30. Graham mine (closed)
 31. Robinson Creek deposit
 32. Prince Albert (Monarch) mine (closed)
 33. Laurel Lake (Amisk) deposit
 34. Newcor, Bootleg (Rio), and Henning-Maloney mines (closed)
 35. McMillan prospect
- COPPER-ZINC**
 1. Janice Lake prospect
 2. Janssen prospect
 3. Frog Lake prospect
 4. Reef Lake prospect
 5. Discovery Lake prospect
 6. Brabant-McKenzie deposit
 7. Borys (Watts) Lake deposit
 8. Elizabeth Lake deposit
 9. Anglo-Rouyn mine (closed)
 10. Pitching Lake deposit
 11. SAD Zone (HBED Zone) deposit
 12. Hook Lake (Gee Lake) deposit
 13. Brownell Lake deposit
 14. Bigstone Lake deposit
 15. Miskat Lake prospect
 16. McIlvenna Bay deposit
 17. McDermott Lake (Balsam Zone) prospect
 18. Ramsay (Quandl/Keppel) deposit
 19. FON and Abbott Lake deposits
 20. Schotts Lake deposit
 21. Knife (Mokoman) Lake deposit
 22. Flin Flon and Callinan mines (closed)
 23. Birch Lake and Flexar mines (closed)
 24. Konuto Lake mine (closed)
 25. Coronation mine (closed)
 26. Grassberry deposit
 27. Archibald Lake deposit
- IRON FORMATION**
 1. Fish Hook Bay deposit
 2. Triana deposit
 3. Spence Lake deposit
 4. Nyberg Lake (VH) deposit
 5. Ithingo Lake deposit
 6. Kelsey Lake deposit
 7. Choceland deposit
- RARE EARTH ELEMENTS**
 1. Hoidas Lake - Nisikkatch Lake deposit (+U and Th)
 2. Bear Lake occurrence (+U and Th)
 3. Alces Lake occurrence (+U and Th)
 4. Oldman Lake (U) occurrence
 5. Archie Lake (+Th) prospect
 6. Adair Bay occurrence (+Th)
 7. Nevins Lake occurrence (+Th)
 8. Maw REE Zone prospect
 9. Douglas River occurrence
 10. Beatty River Area 10 occurrence
 11. DDH KEY005 (+Th)
 12. Kulyk Lake occurrence (+U and Th)
 13. Charcoal 6 occurrence (+Th)
 14. Cup Lake occurrence (+Co, Ni and U)
- KIMBERLITE**
 1. Sturgeon Lake rafted kimberlite blocks
 2. Candle Lake kimberlites
 3. Fort à la Corne kimberlite field
 4. Star-Onion South kimberlites
 5. Pikoo kimberlites
- MISCELLANEOUS**
 1. Deep Bay graphite
 2. Pasquia Hills oil shale
 3. Bainbridge nodular manganese
 4. Pinehouse limestone
 5. Wolverine Point phosphate
 6. Simonsen Lake bitumen resource
 7. Clearwater River bitumen show
 8. Peter Pond Lake bitumen show
- HELIUM**
 1. Manikota plant (Weil Group)
 2. Wilhelm (Canadian Helium)
 3. Battle Creek (North American Helium)
- POTASH AND SALT**
 1. Vanscoy potash mine (Nutrien) and salt plant (NSC Minerals)
 2. Cory Division potash mine (Nutrien) (byproduct CaCl₂ brine)
 3. Patience Lake Division potash solution mine (Nutrien)
 4. Allan Division potash mine (Nutrien)
 5. Colonsay potash mine (The Mosaic Company)
 6. Lanigan Division potash mine (Nutrien)
 7. Esterhazy potash operation (K-1, K-2 and K-3; The Mosaic Company)
 8. Rocanville Division potash mine (Nutrien) and salt plant (NSC Minerals)
 9. Belle Plaine potash solution mine (The Mosaic Company) and fine salt plant (processes waste salt from potash mine) (K+S Windsor Salt Ltd.)
 10. Bethune mine (K+S Potash Canada)
 11. Unity solution salt mine and plant (Compass Minerals)
 12. Saskatoon chloride-based chemical plant (ERCO Worldwide)
 13. Jansen project
 14. Wynyard project
 15. Milestone project
 16. Albany project
 9. Vincent Lake deposit
 10. Snakehole Lake plant (closed)
 11. Verlo East deposit
 12. Caylon Lake (Salt Lake) deposit
 13. Chaplin Lake plant (Sask. Minerals)
 14. Frederick Lake (Bishopric) plant (closed)
 15. Horseshoe (Shoe) Lake plant (closed)
 16. Sybouts East (East Coteau Lake) plant (closed)
- POTASSIUM SULFATE**
 1. Alsask Lake plant (closed)
 2. Big Quill Lake plant (Compass Minerals)
- MAGNESIUM SULFATE**
 1. Beechy plant (Touchwood Resources)
- CLAY RESOURCES**
 1. Saskatoon clay quarry and plant (Cindercrete Products Ltd.)
 2. Ravenscrag clay quarry (brick) (I-XL Industries Ltd.)
 3. PR-1 and PR-3 clay quarries (stoneware) (Plainsman Clays Ltd.)
 4. Eastend clay deposit
 5. Frenchman clay prospect
 6. Wood Mountain - Fir Mountain kaolin prospect
 7. Flintoft clay pit (refractory and ball clay) (closed)
 8. Gollier Creek kaolin quarry (Whitemud Resources Ltd.)
 9. Rockglen clay pit (brick clay)
 10. St. Victor bentonite deposit (swelling bentonite)
 11. Readlyn ball clay deposit and Willows clay pit (refractory and ball clay)
 12. A.P. Green Claybank brick plant (closed)
 13. Truax bentonite quarry (closed)
 14. Wilcox bentonite plant (closed)
 15. Willow Bunch clinker quarry (Colored Shale Products Inc.)
- COAL AND PEAT**
 1. Poplar River coal mine (Westmoreland Coal Company)
 2. Estevan coal mine (Westmoreland Coal Company)
 3. Hudson Bay area coal deposits
 4. Lac La Ronge lignite (sub-bituminous) deposit
 5. Carrot River peat moss mine (Premier Tech Horticulture)
 6. Carrot River peat moss plant (Premier Tech Horticulture)
 7. Smokey Ridge peat bog (Premier Tech Horticulture)
 8. Wapa Bay leonardite quarry (Wapaw Bay Humates)
- BUILDING MATERIALS**
 1. Neyrink Lake black and grey granite (diorite) building stone
 2. Sahli green granite building stone
 3. Deschambault marble (dolomite) quarry (Graham Construction)
 4. Mystic Lake "Verde Antique" marble (veined amphibolite) building stone
 5. McNally Lake buckskin marble (dolomite) building stone
 6. Amisk Lake red marble (dolomite) building stone
 7. Waskwei River cement rock deposit
 8. Hudson Bay cement rock deposit
- SILICA SAND**
 1. Bow River silica sand deposit
 2. Nipekamew River silica sand deposit
 3. Wapawekka Lake silica sand deposit
 4. Hanson Lake silica sand deposit
 5. Red Deer River silica sand quarry (Red Deer Silica Inc.)
 6. CanFrac silica sand quarry

LEGEND

- Uranium potential
- Base metal potential
- Gold potential
- Major peat resource potential
- Coal field
- Potash and salt resource area
- Oil pool
- Gas pool
- Helium potential
- Lithium potential
- Bitumen (oil sands) potential
- Commercial forestry

SYMBOLS

- Edge of Precambrian Shield
- Precambrian domain boundary and name
- Major bounding shear zone
- Road
- City
- Town
- Forest products mill



Although the Saskatchewan Ministry of Energy and Resources has exercised all reasonable care in the compilation, interpretation, and production of this map, it is not possible to ensure total accuracy, and all persons who rely on the information contained herein do so at their own risk. The Ministry of Energy and Resources and the Government of Saskatchewan do not accept liability for any errors, omissions, or inaccuracies that may be included in, or derived from, this map.

Recommended Citation:
 Saskatchewan Geological Survey (2021). Resource Map of Saskatchewan, 2021 Edition; Saskatchewan Ministry of Energy and Resources, Saskatchewan Geological Survey, Miscellaneous Report 2021-1.

