

Saskatchewan Minerals

How mining benefited local and global communities in 2023



Payroll

> **\$1.5 BILLION**

From exploration through operations and export, SK companies **support jobs** in every part of the province.



SK mining operations paid more than **\$1.5 billion** to employees in 2023.

Employment

> **11,000 DIRECT JOBS**



For every **direct job** in the SK mining industry, there are at least **two jobs** in the mining supply and service sector.



Taxes

> **\$2.7 BILLION**

In 2023 SK mining companies contributed over **\$2.7 billion** in provincial, federal and municipal taxes, creating government revenue for health care, education and infrastructure development.

12%
of SK GDP

The SK mining sector represents **12%** of the province's Gross Domestic Product (total value of goods and services produced).



Statistics have been compiled from information provided by Saskatchewan's potash mining companies, Government of Saskatchewan Dashboard, Saskatchewan Workers Compensation Board, Mining Association of Canada (Facts and Figures 2020) and Statistics Canada. All numbers are from 2023.



SMA
Saskatchewan
Mining Association

saskmining.ca

@SaskMiningAssoc



Value of Mineral Sales

\$12.5 BILLION

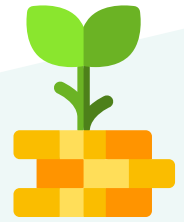
In 2023 the value of mineral sales from SK mining operations were over **\$12.5 billion**.



Capital Investment

\$3.7 BILLION

In 2023 SK mining operations invested **\$3.7 billion** in capital projects.



Top 5 markets

SK Potash

United States

Brazil

China

Bangladesh

India

SK Uranium

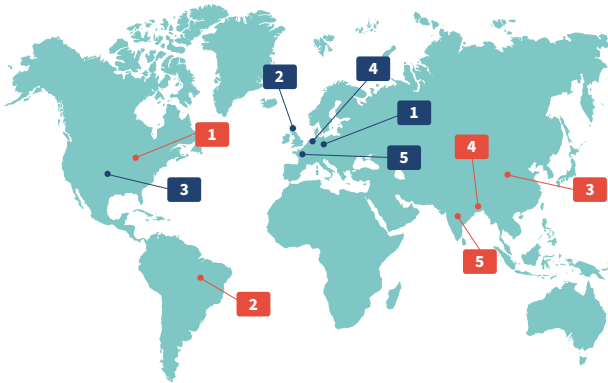
Germany

United Kingdom

United States

Netherlands

France



Procurement

> \$2.8 BILLION

In 2023 SK mining companies purchased over **\$2.8 billion** of their total goods and services from Saskatchewan suppliers.



Indigenous Business

> \$670 MILLION

In 2023 SK mining operations purchased over **\$670 million** of goods and services from Indigenous-owned businesses.



Community

> \$35 MILLION

In 2023 SK mining operations invested over **\$35 million** in social and community contributions.

