

SASKATCHEWAN METALLIC MINERALS

Gold's many uses include dentistry, jewellery, medical and electronic applications.

A snapshot of Saskatchewan's metallic minerals industry in 2021

Saskatchewan has one producing gold mine, SSR Mining's Seabee Gold Operation, located approximately 125 kms northeast of La Ronge.

ECONOMIC CONTRIBUTIONS



FINANCIAL

CONTRIBUTION TO GDP:
\$131.5 Million

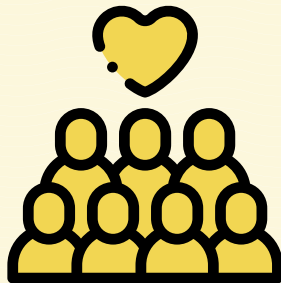
TAXES:
\$19 Million
(Federal, Provincial and Local)



COMMUNITY INVESTMENT

Saskatchewan mining companies invest in community initiatives, programs, and causes that enhance quality of life across the province.

\$53,000
Invested in local organizations, Indigenous partnerships and scholarships



EMPLOYMENT

For **every direct job** in the Saskatchewan mining industry, there are **at least two jobs** in the mining supply and service sector.

JOBS
399

Saskatchewan employees including contractors



SALARIES
(employees only)
\$53 Million

Total payroll

\$109,191

2021 national average salary of employees in Saskatchewan mining industry – 52% higher than average annual earnings of Saskatchewan workers.



Metallic minerals are valuable resources that have a significant positive impact on the economy of Saskatchewan and its communities.

PRODUCTION

Saskatchewan's 2021 gold production came entirely from **SSR Mining's Seabee Gold Operation**.

The Seabee mill facility produces gold doré bars that are shipped to a third party refinery.



VALUE OF PRODUCTION

118,888
troy ounces

MINERAL RESERVES

totaled
580,000
ounces of gold



SAFETY

Mining is one of the safest industries in Saskatchewan, and in Canada.

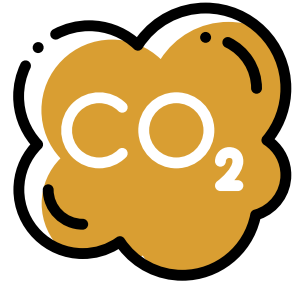
Lost Time Injuries per 1 million hrs. worked: **1.6**



GHG EMISSIONS INTENSITY

.51 tonnes
CO₂ e

per oz gold produced



PROCUREMENT

\$40 Million

goods and services procured from Saskatchewan businesses.



\$11.5
Million

goods and services procured from partially-owned or fully-owned SK Indigenous businesses

Statistics have been compiled from information provided by SSR Mining Seabee Gold Operation, SSR 2020 ESG and Sustainability Report and Statistics Canada. All numbers are from 2021.



SMA
Saskatchewan
Mining Association

saskmining.ca



@SaskMiningAssoc