

POTASH

FEEDS THE WORLD



WHAT IS POTASH?

Potash is a pink and salty sedimentary rock made of many minerals. Over 400 million years ago potash formed after an ancient sea evaporated.



1

Potash is a critical mineral used as a fertilizer providing potassium nutrients to grow healthy crops worldwide for a soaring population.



WHY IS IT IMPORTANT?

Potash is also used in:
Water Softener Salt
Road Salt
Hand Soap
Baby Formula
Touch Screens
Medicine
Spaceship Fuel



3

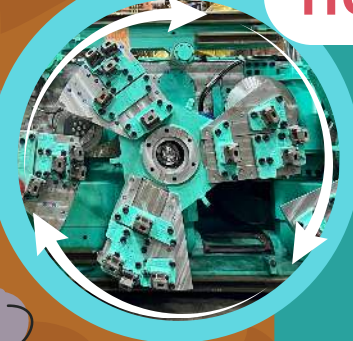


4



HOW IS IT MINED?

Four-Rotor machines are used to dig tunnels reaching potash near the surface. Another way to mine potash is by using water pipes to dissolve the potash deep underground creating a solution.



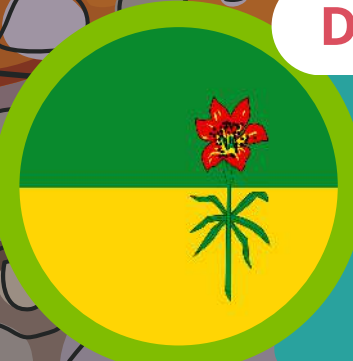
5

WHERE IN SK?

Potash is found throughout central and southern Saskatchewan - at more than 1000 m below our feet.

DID YOU KNOW?

Sylvite is the potassium mineral in potash - Official Mineral of Saskatchewan. We are the #1 potash producer, providing 33% of global demand.



Manitou Sakaḥīcan is a very salty lake located in west central Saskatchewan. So salty that swimmers can easily float on their backs. In Cree, the name means "Great Spirit Lake". The lake is an important place for Indigenous Peoples because of its healing waters.

